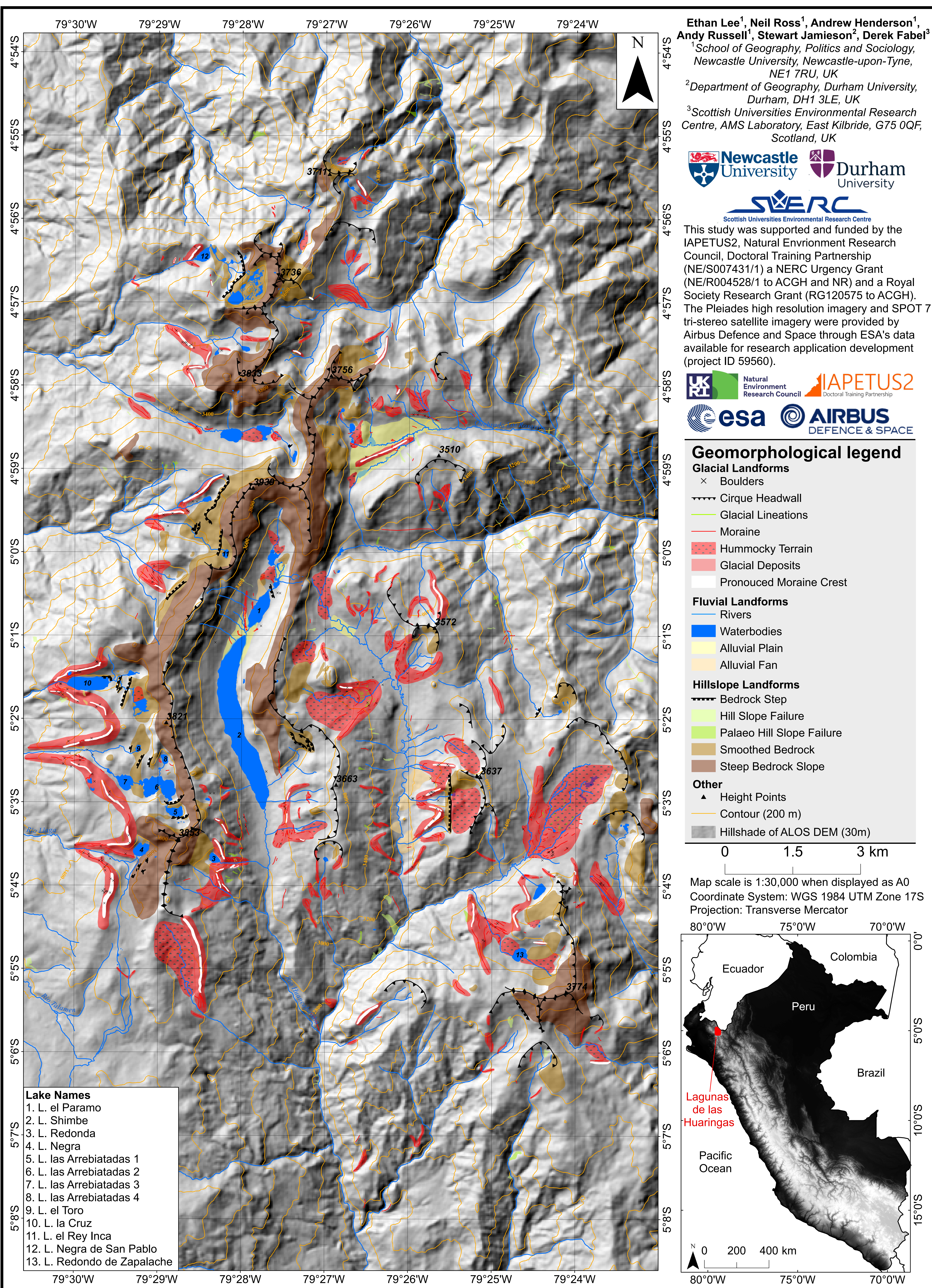


Glacial Geomorphology of the Lagunas de las Huaringas, northern Peru



Ethan Lee¹, Neil Ross¹, Andrew Henderson¹,
Andy Russell¹, Stewart Jamieson², Derek Fabel³
¹School of Geography, Politics and Sociology,
Newcastle University, Newcastle-upon-Tyne,
NE1 7RU, UK
²Department of Geography, Durham University,
Durham, DH1 3LE, UK
³Scottish Universities Environmental Research
Centre, AMS Laboratory, East Kilbride, G75 0QF,
Scotland, UK



This study was supported and funded by the
IAPETUS2, Natural Environment Research
Council, Doctoral Training Partnership
(NE/S007431/1) a NERC Urgency Grant
(NE/R004528/1 to ACGH and NR) and a Royal
Society Research Grant (RG120575 to ACGH).
The Pleiades high resolution imagery and SPOT 7
tri-stereo satellite imagery were provided by
Airbus Defence and Space through ESA's data
available for research application development
(project ID 59560).

